



# ORGANI ADDOMINALI

Corso soccorritore – esecutore 2015





# Cavit  addominale

- Apparato digerente: tubo digerente ed annessi ghiandolari, peritoneo.
- Apparato urinario
- Apparato riproduttivo
- Milza
- Aorta e grandi vasi





# APPARATO DIGERENTE



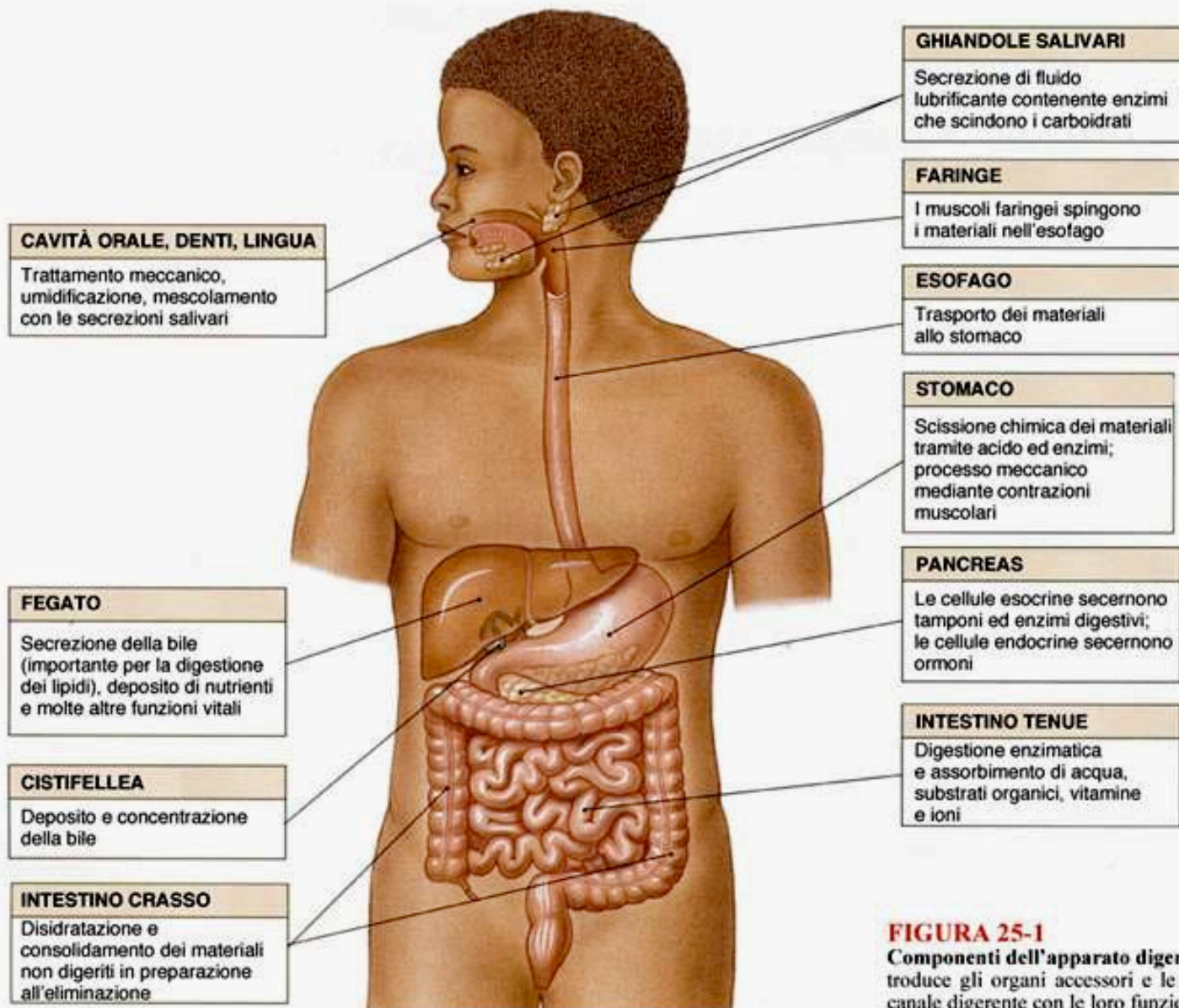
## TUBO DIGERENTE

- Bocca
- Faringe
- Esofago
- Stomaco
- Duodeno
- Intestino tenue
- Intestino crasso
- Retto e ano

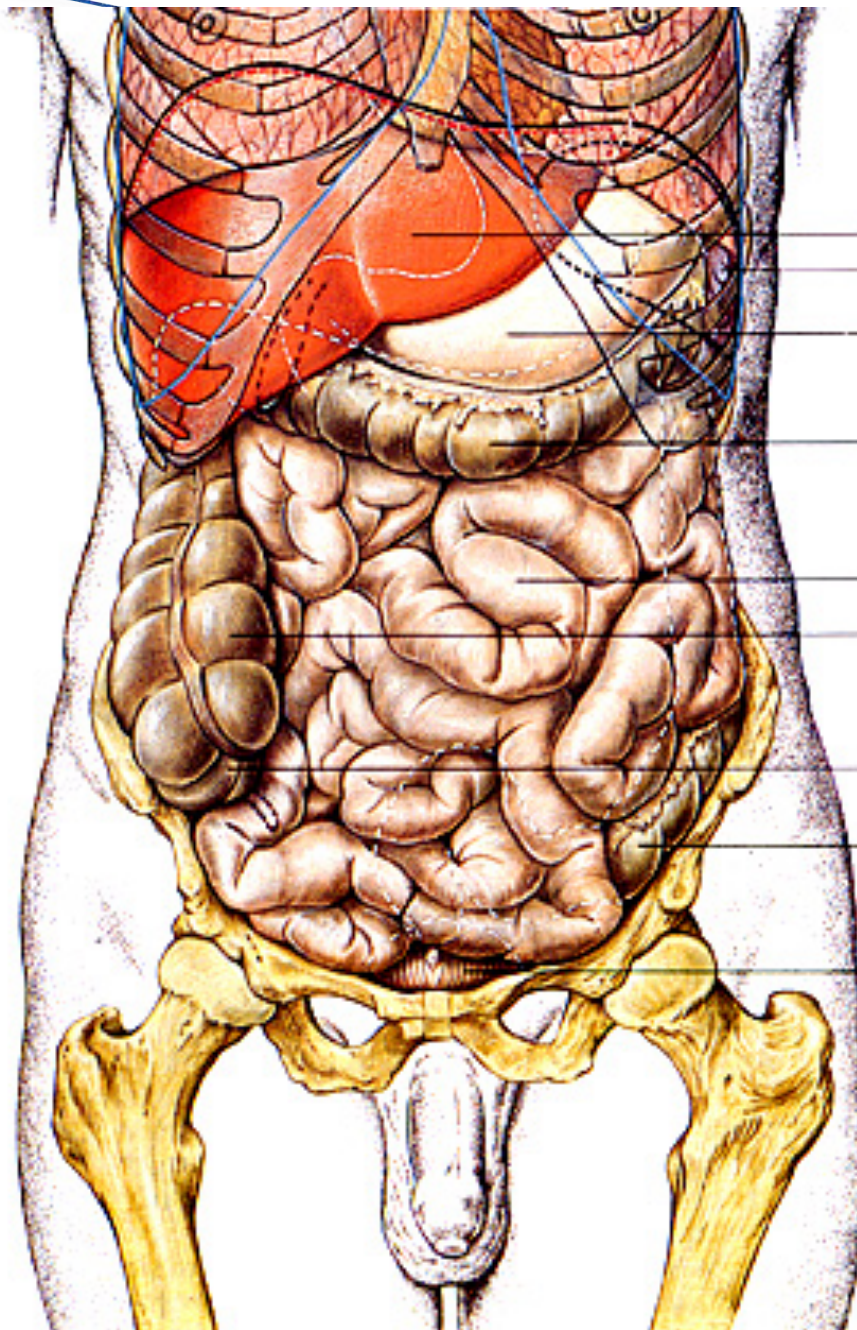
## ANNESI GHIANDOLARI

- Ghiandole salivari
- Fegato e Cistifellea
- Pancreas





**FIGURA 25-1**  
**Componenti dell'apparato digerente.** Schema che introduce gli organi accessori e le principali porzioni del canale digerente con le loro funzioni primarie.



FEGATO

MILZA

STOMACO

COLON  
TRASVERSO

ANSE DEL  
TENUE

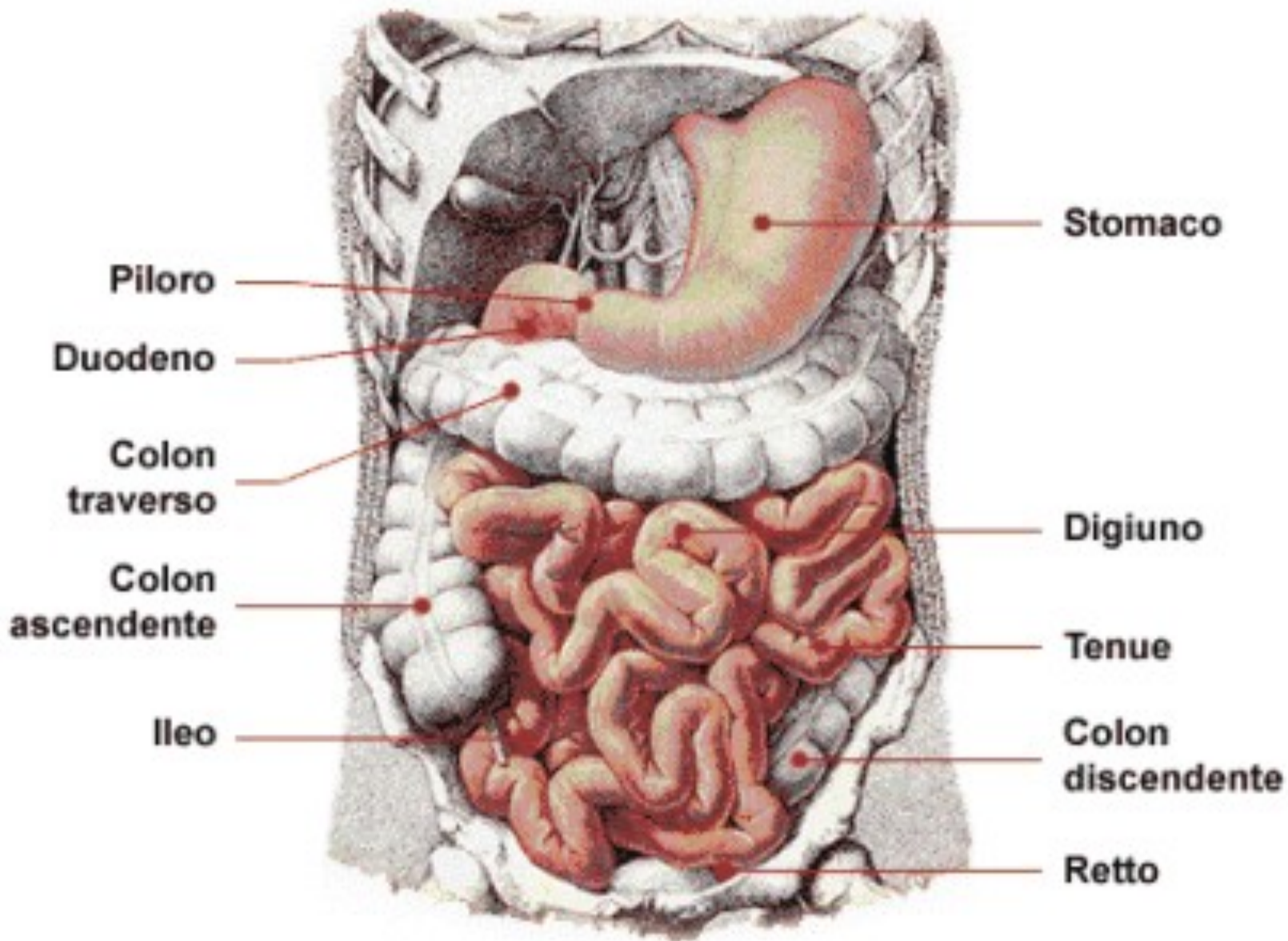
COLON  
ASCENDENTE

INT. CIECO

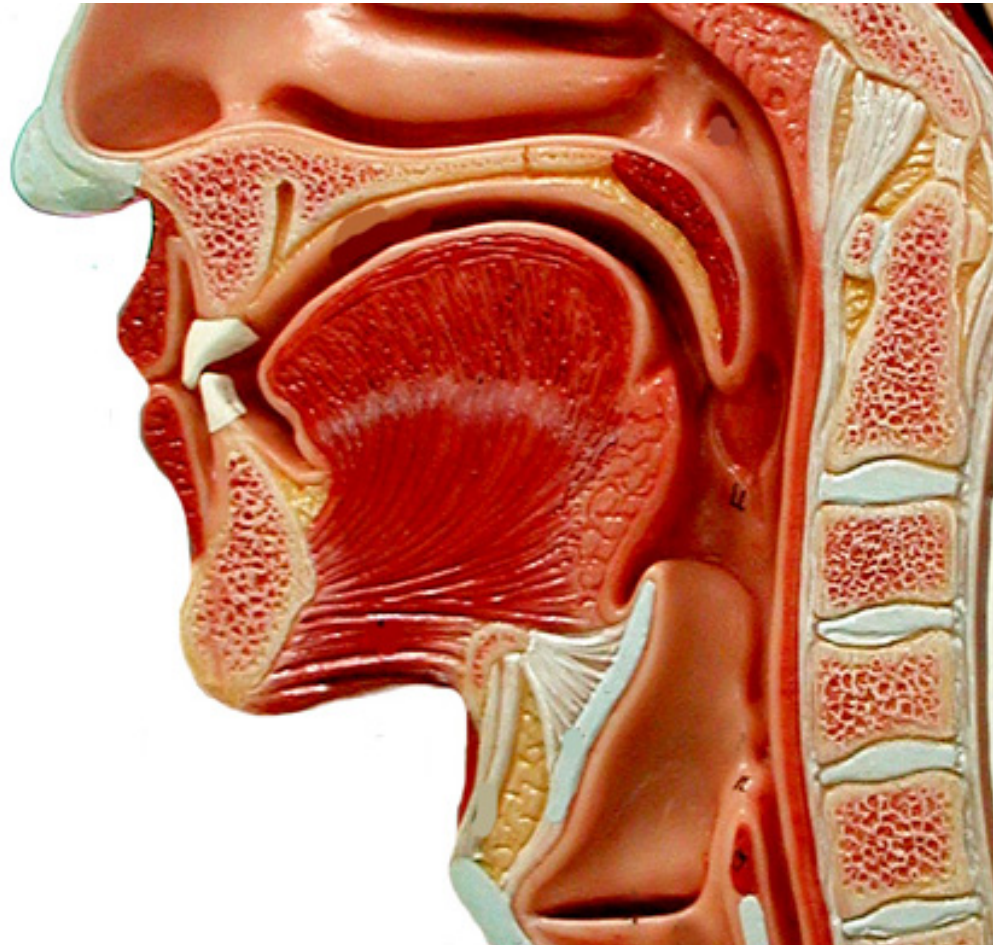
COLON  
SIGMOIDEO

VESCICA

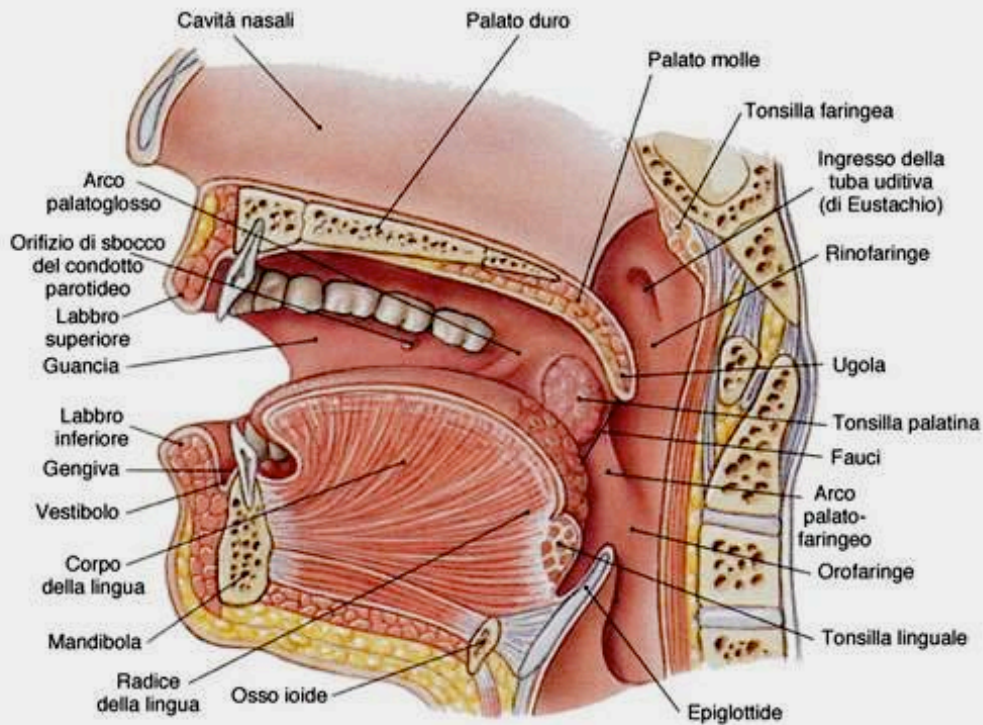




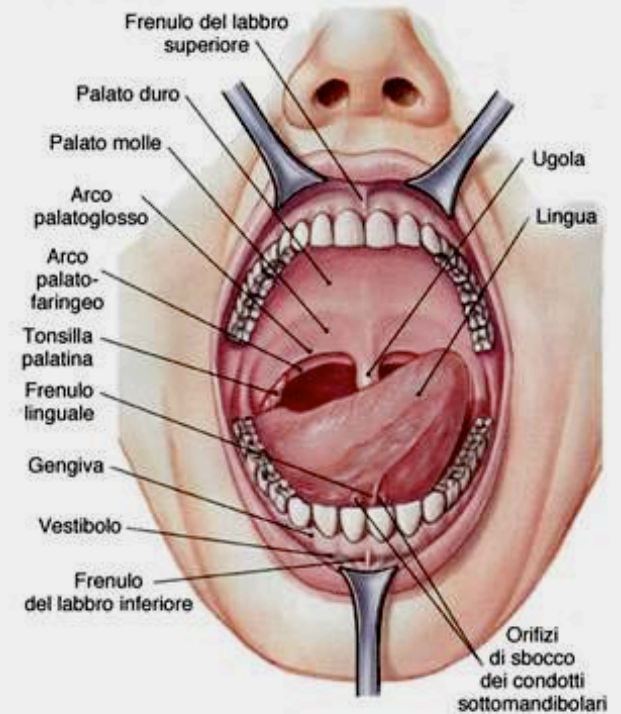
# BOCCA E LINGUA







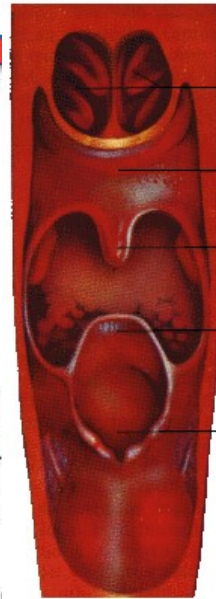
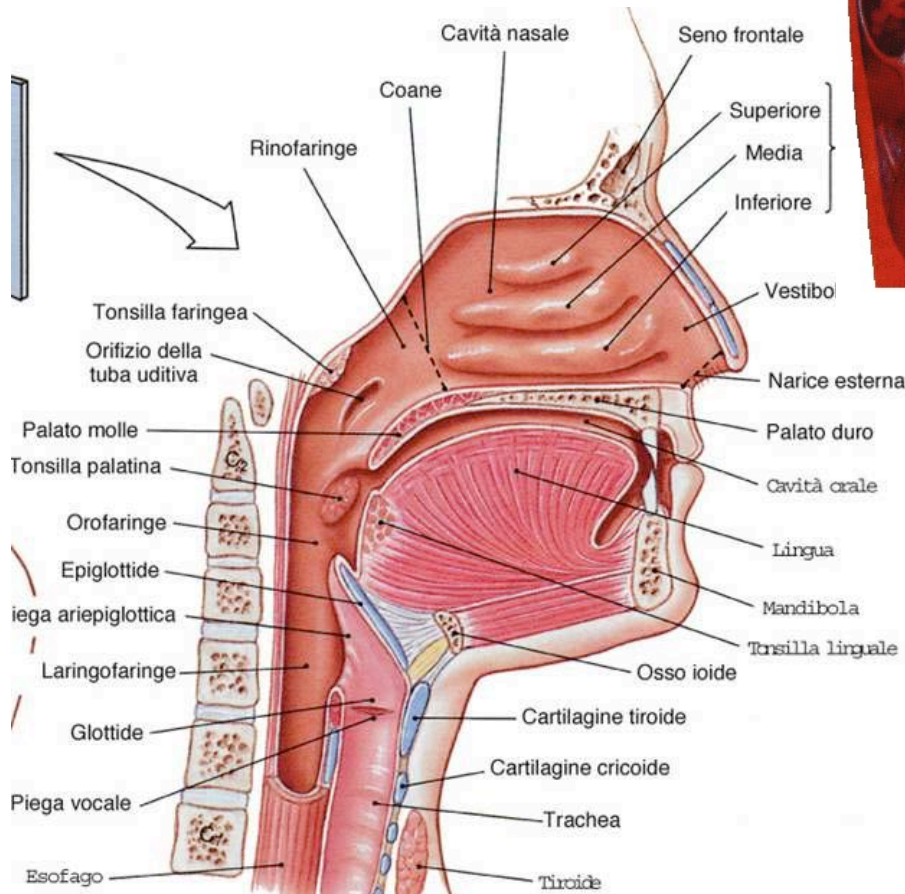
(a) Cavità orale, sezione sagittale



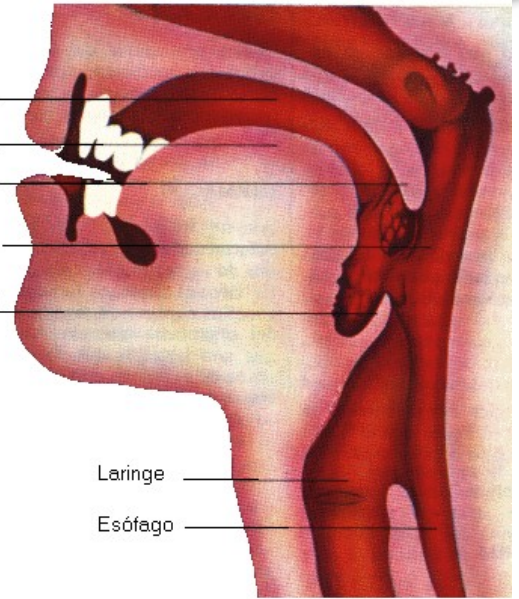
(b) Cavità orale, veduta anteriore



# FARINGE



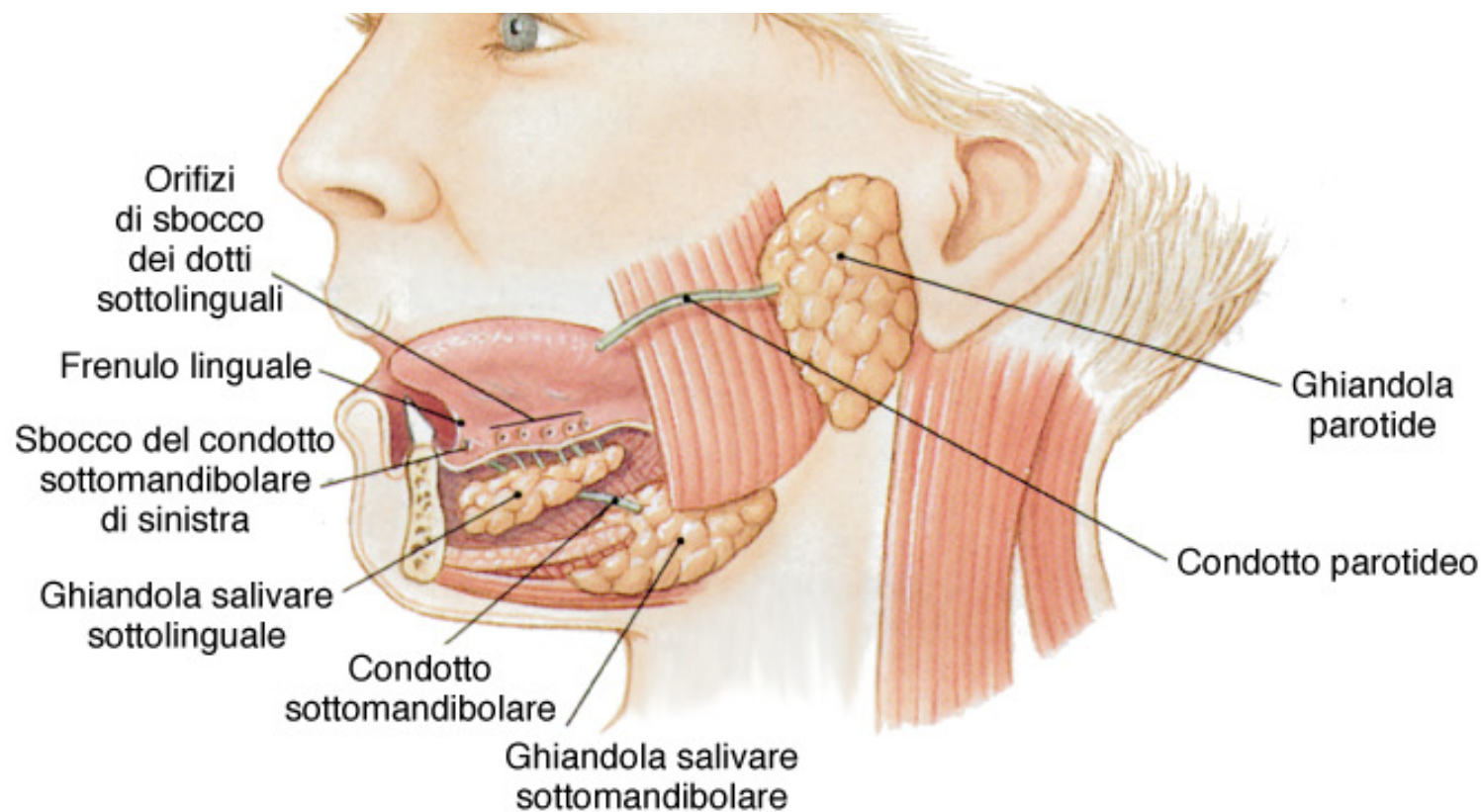
- Coanas Nasales
- Velo Palatino
- Uvula
- Epiglottis
- Laringe



- Cavidad Oral
- Lengua
- Velo del Paladar
- Faringe
- Epiglottis
- Laringe
- Esófago

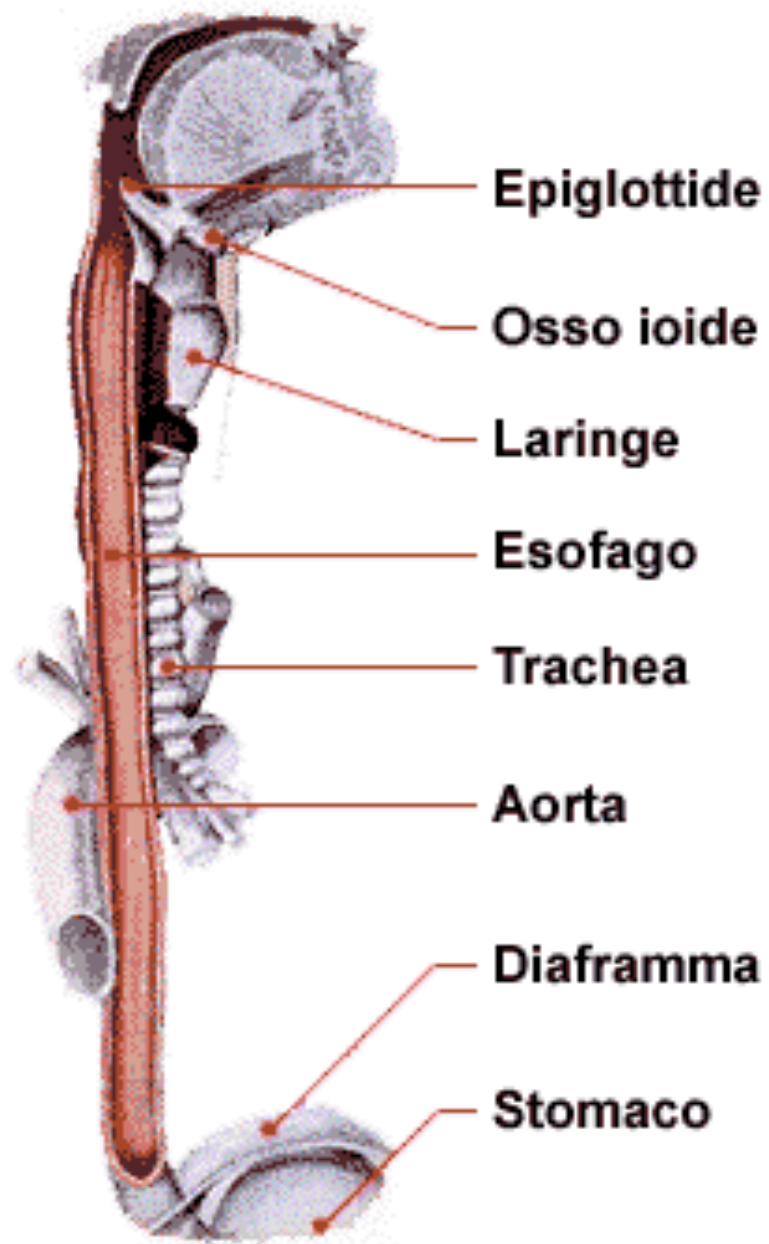


# GHIANDOLE SALIVARI

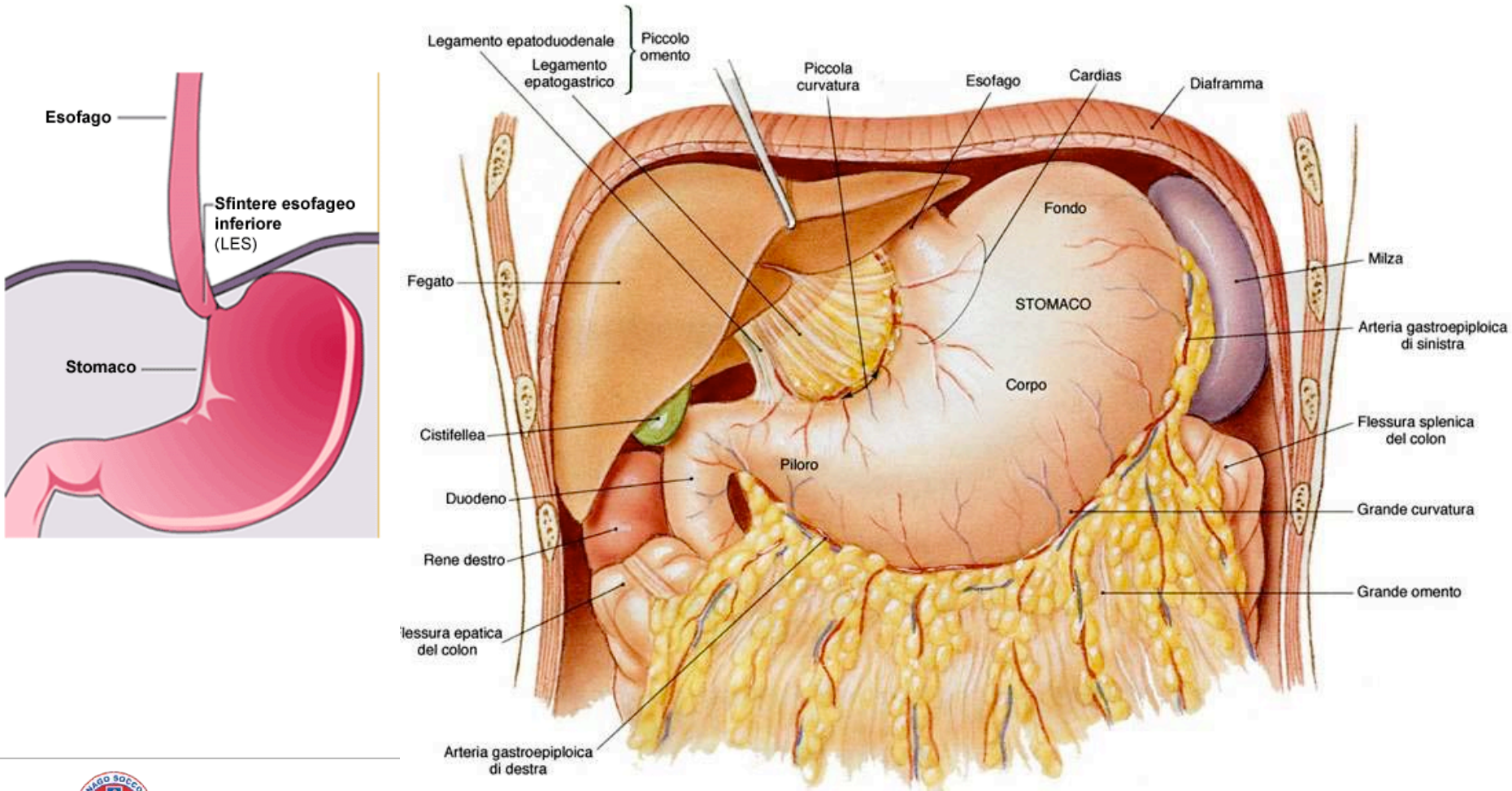


(a) Veduta laterale dopo rimozione del corpo e del ramo della mandibola

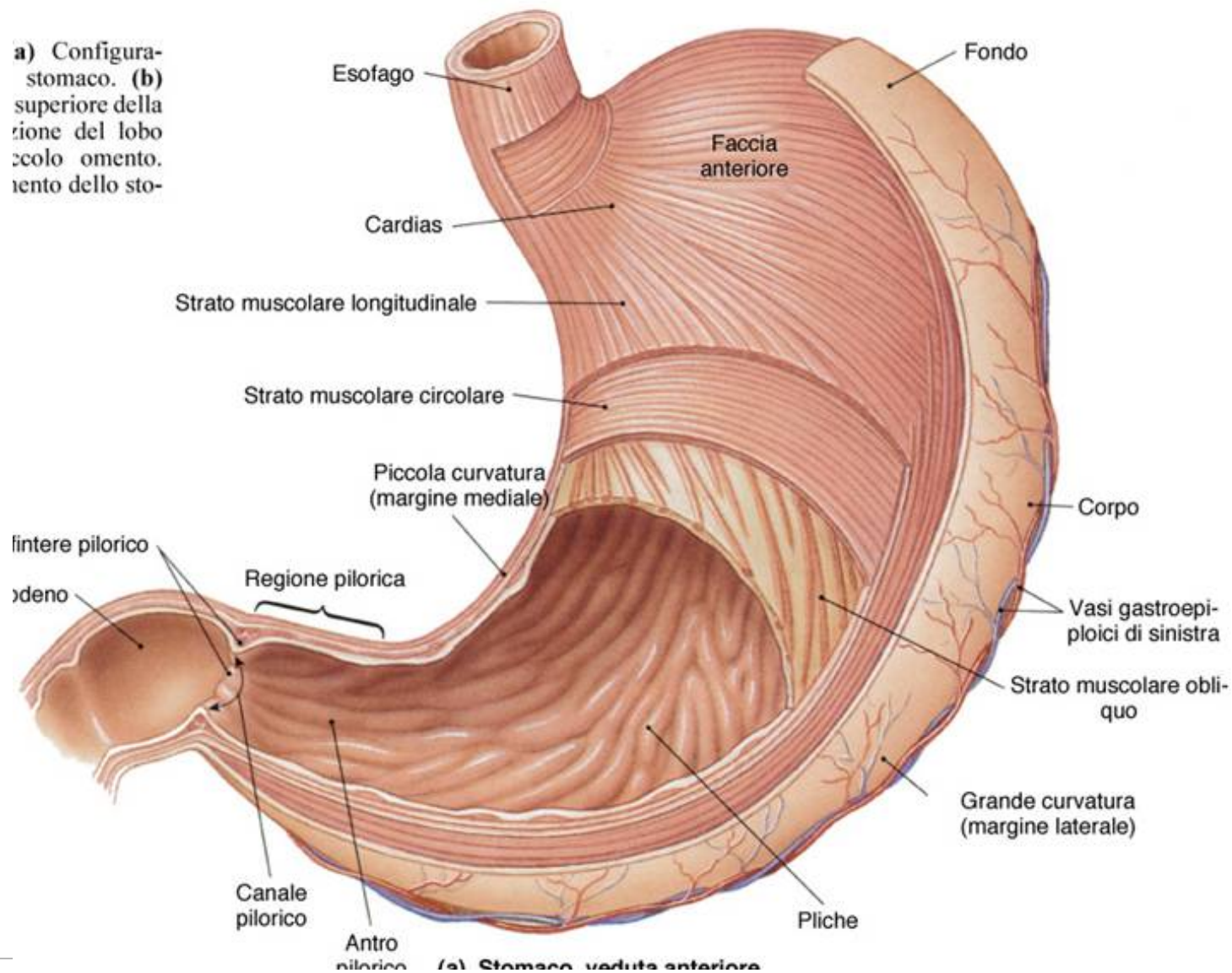
# ESOFAGO



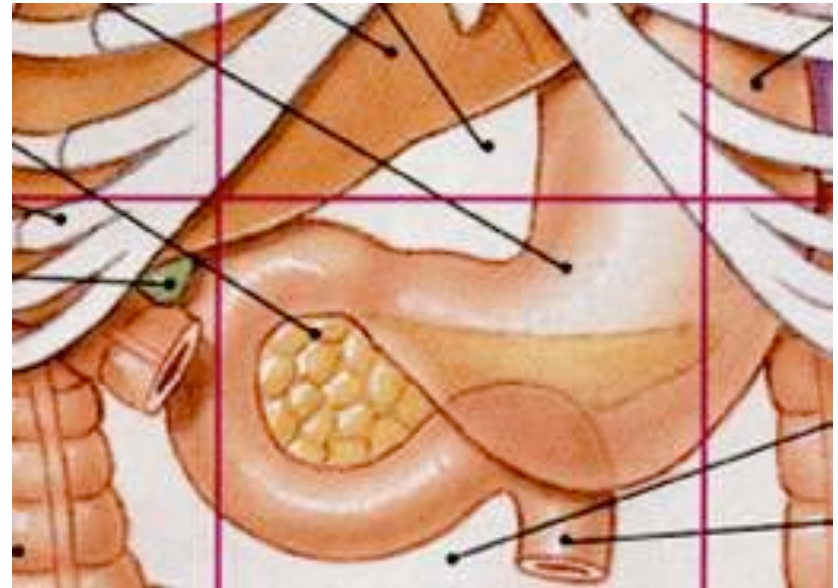
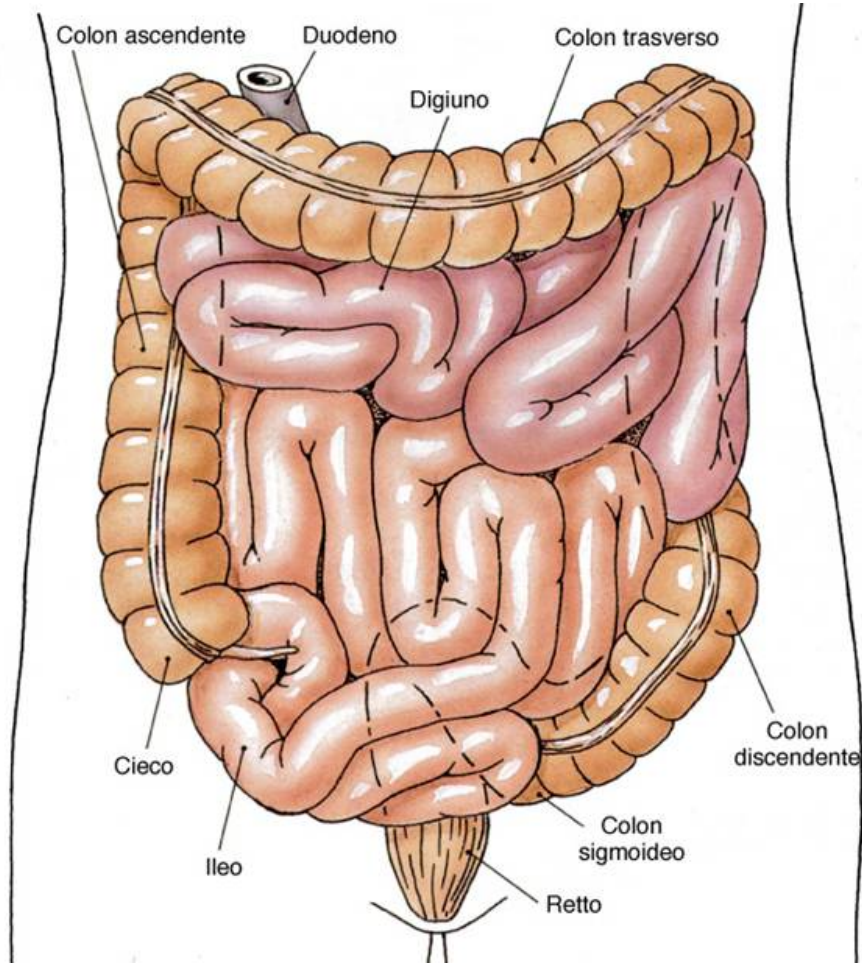
# STOMACO

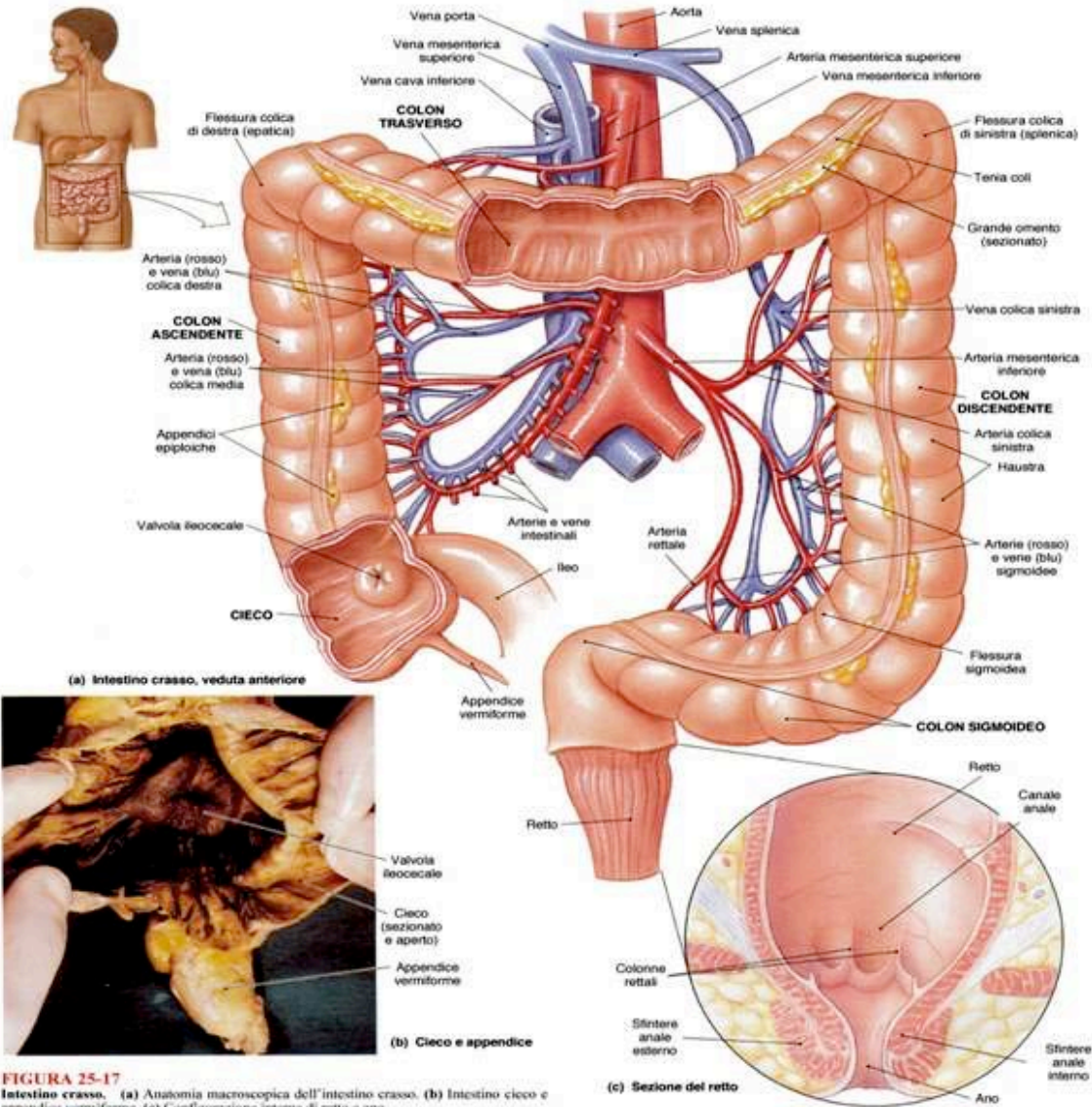


a) Configurazione del stomaco. (b) sezione superiore del lobo omentale. (c) sezione inferiore del lobo omentale.



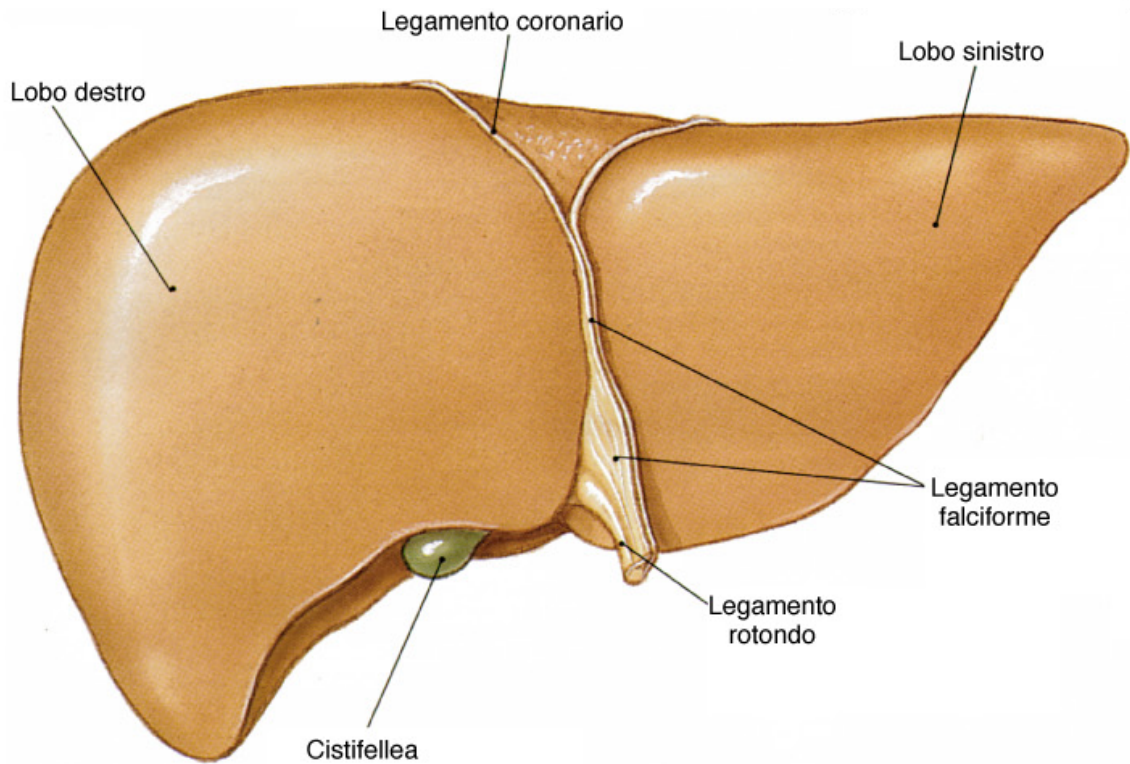
# INTESTINO



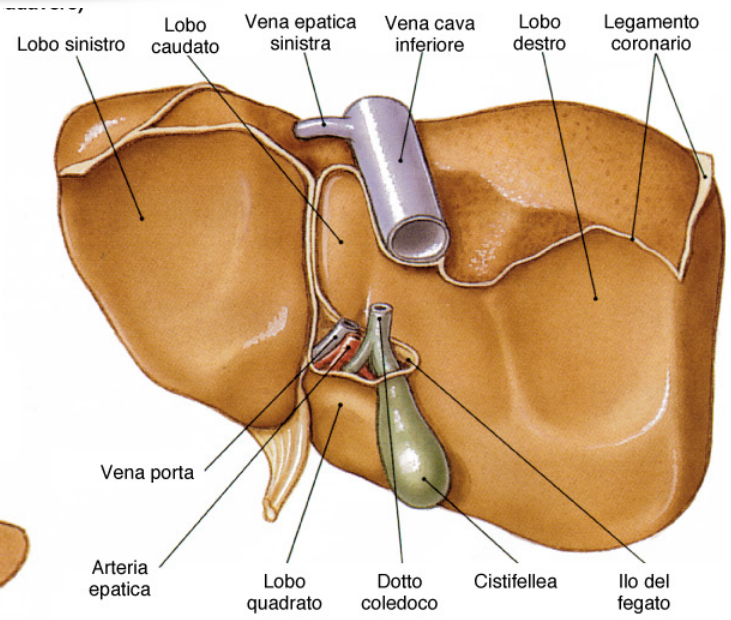




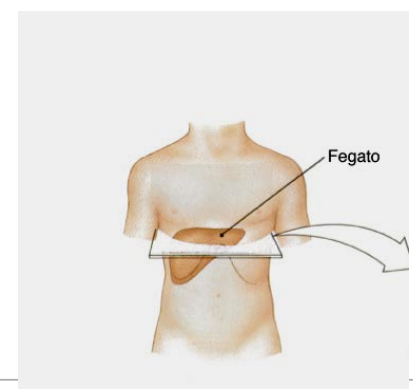
# FEGATO E COLECISTI

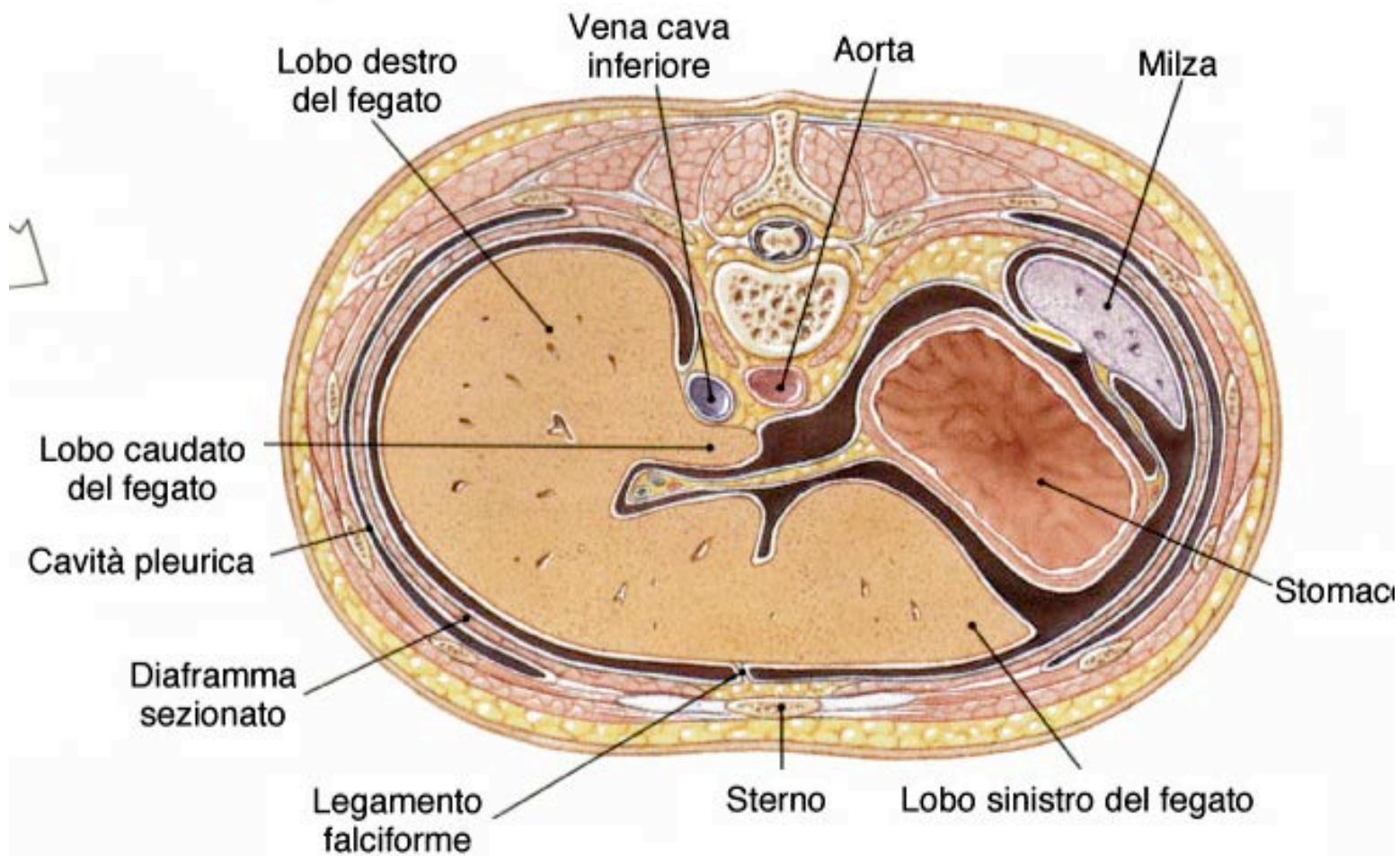


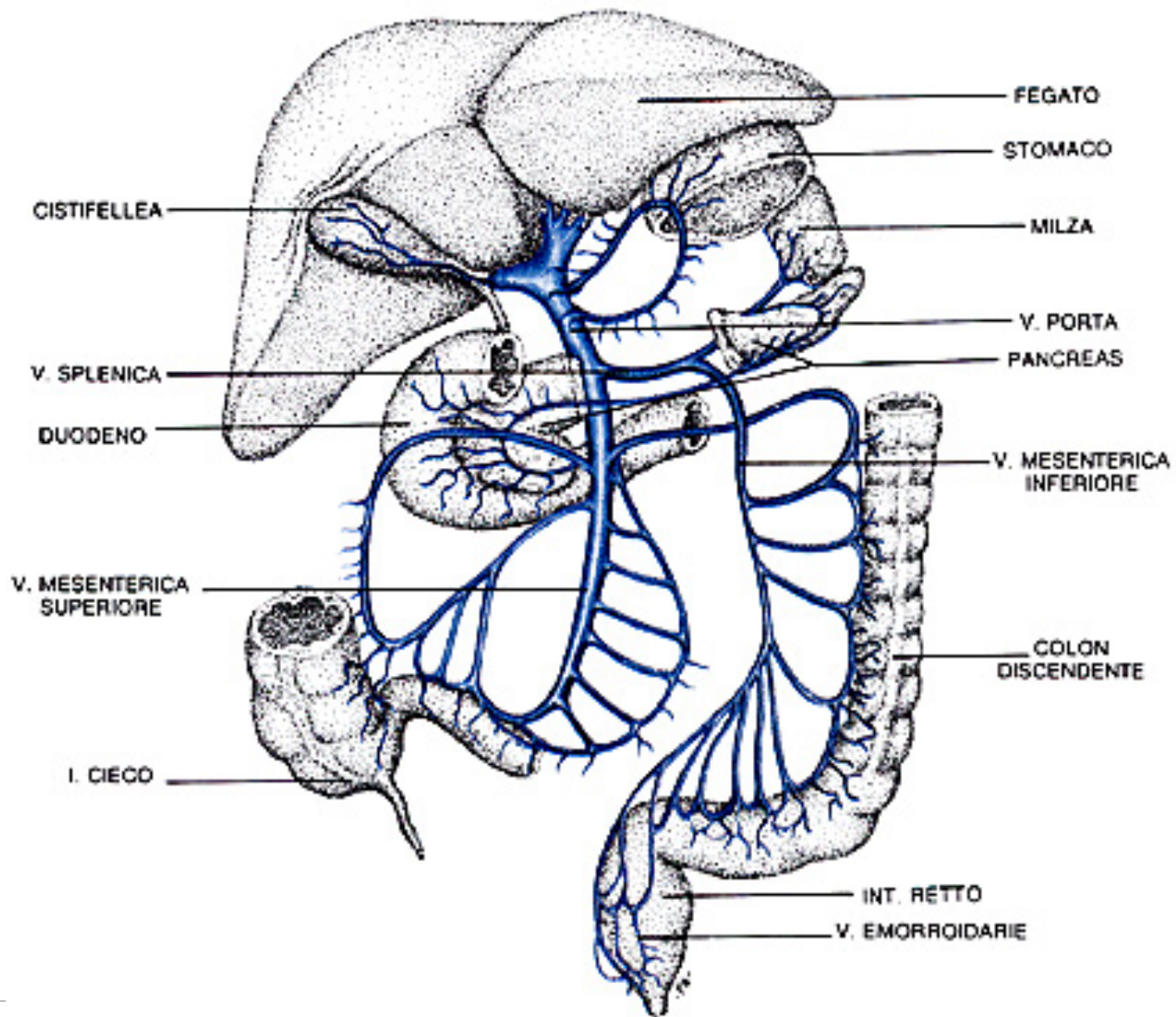
(c) Faccia anteriore (parietale)



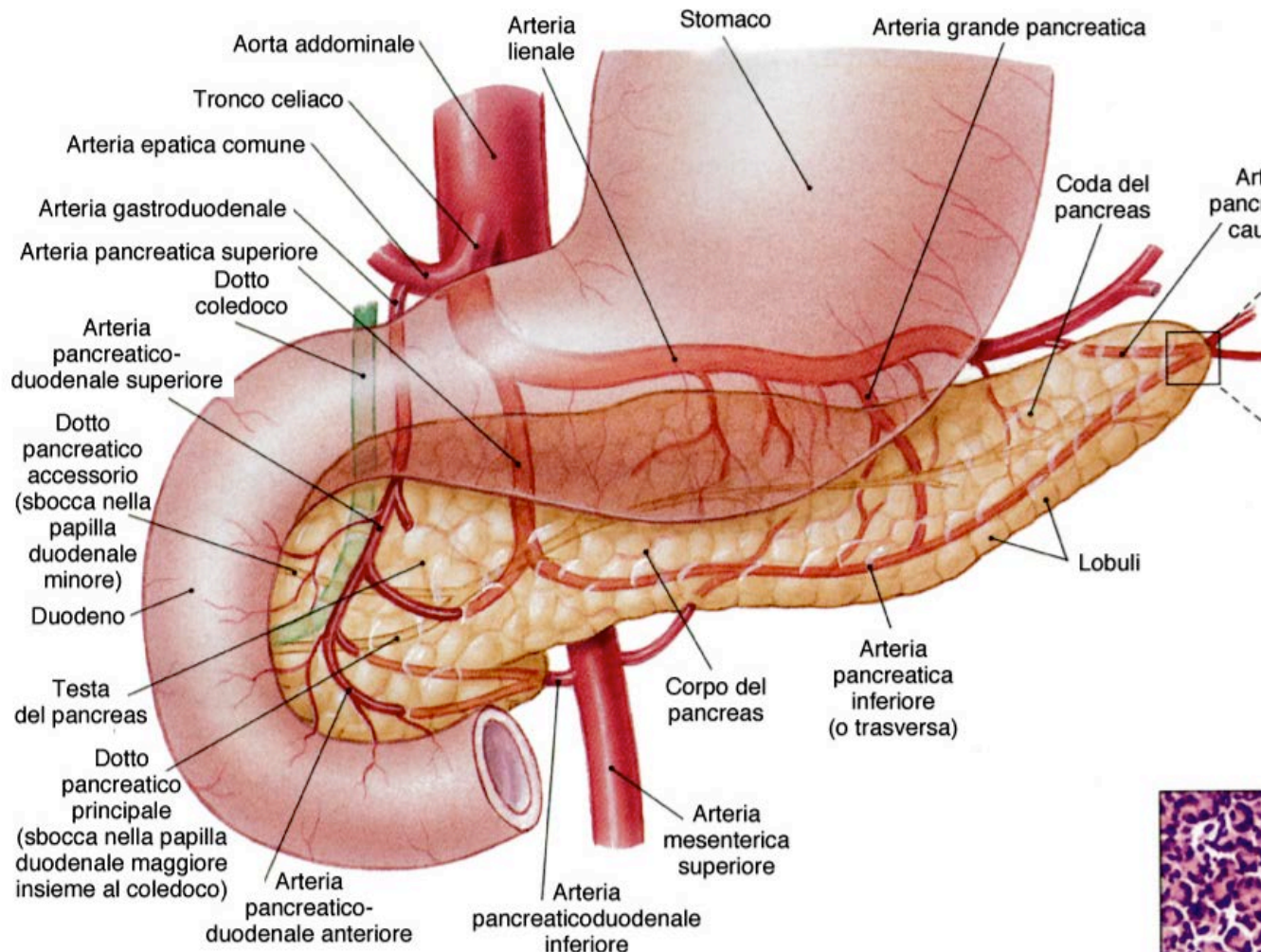
(d) Faccia posteriore (viscerale)

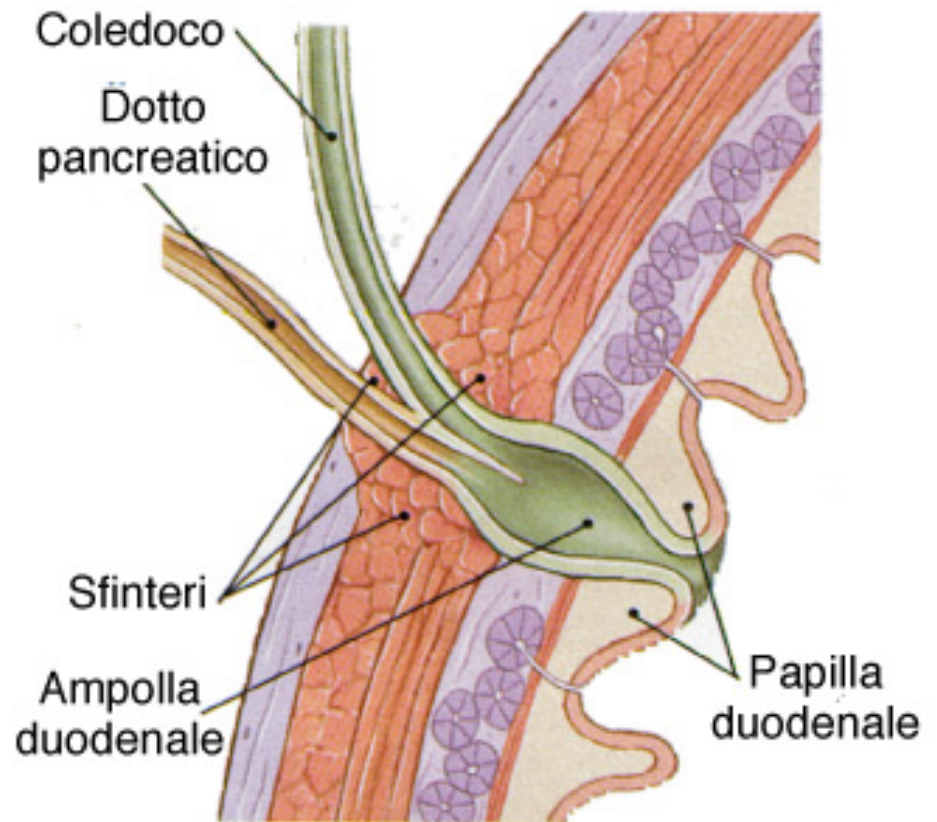
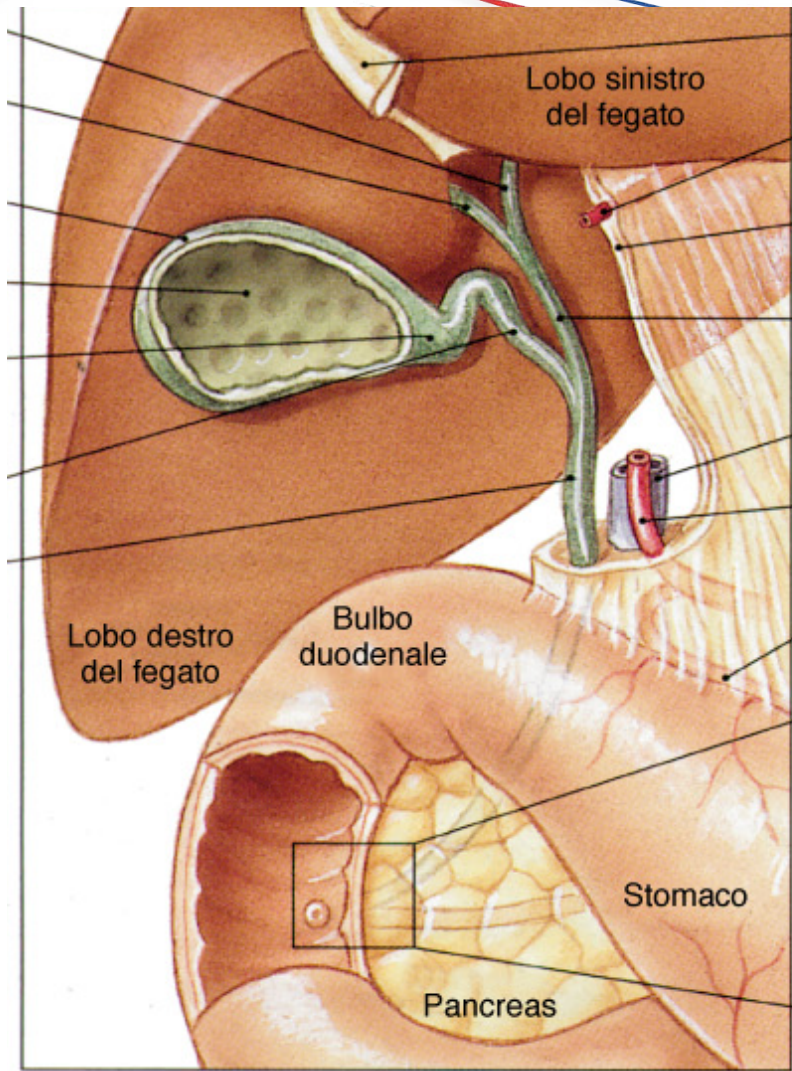






# PANCREAS



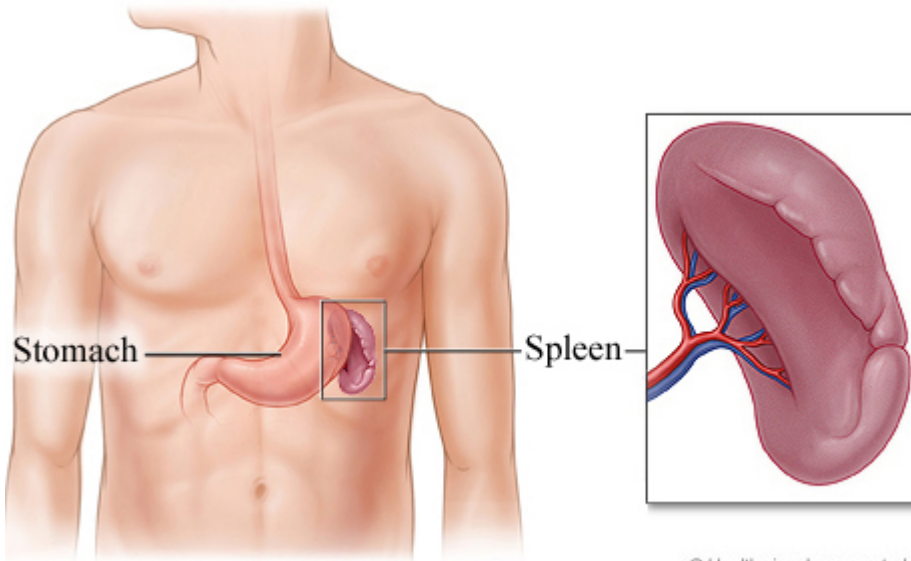
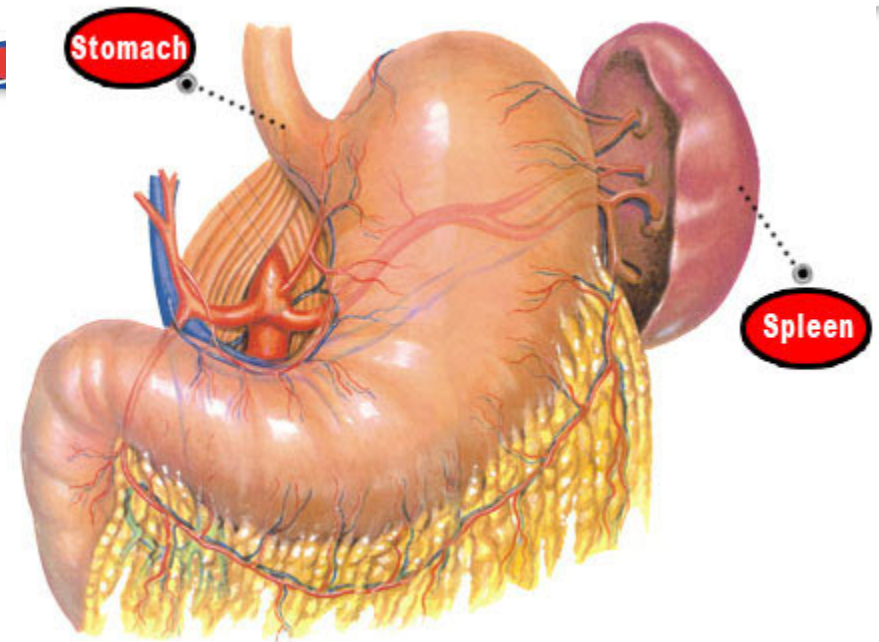




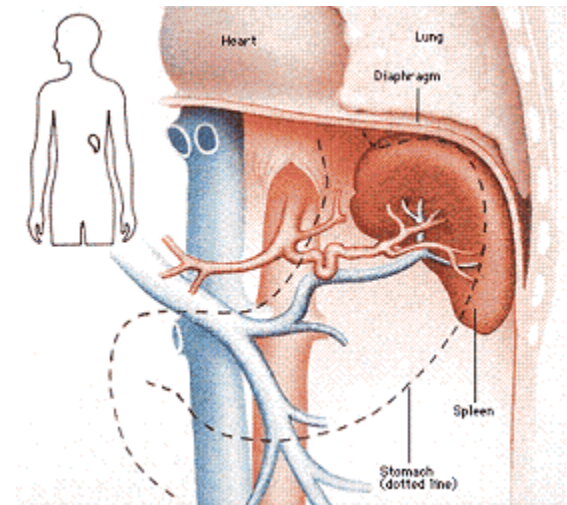
# ALTRI ORGANI ADDOMINALI

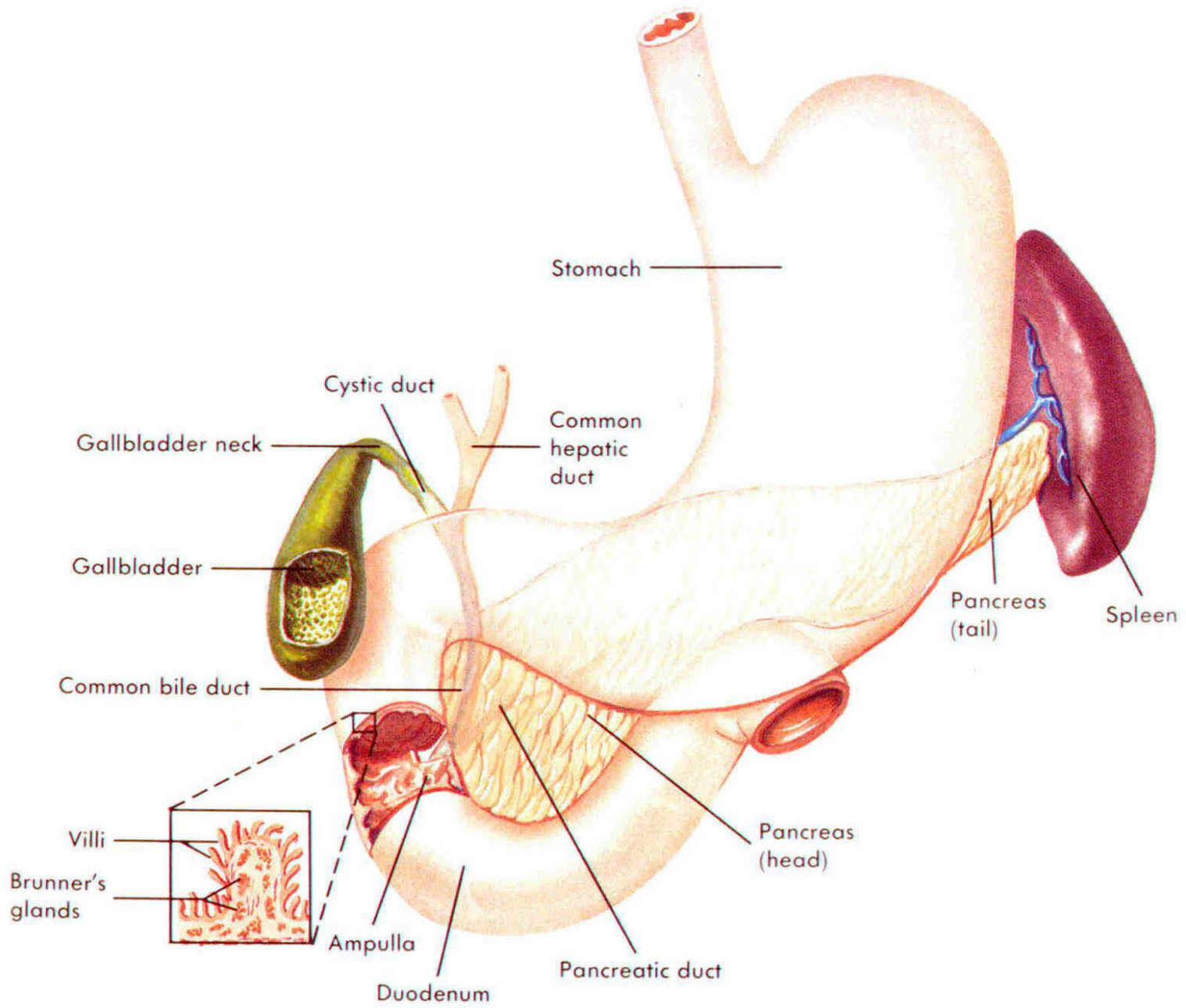


# MILZA



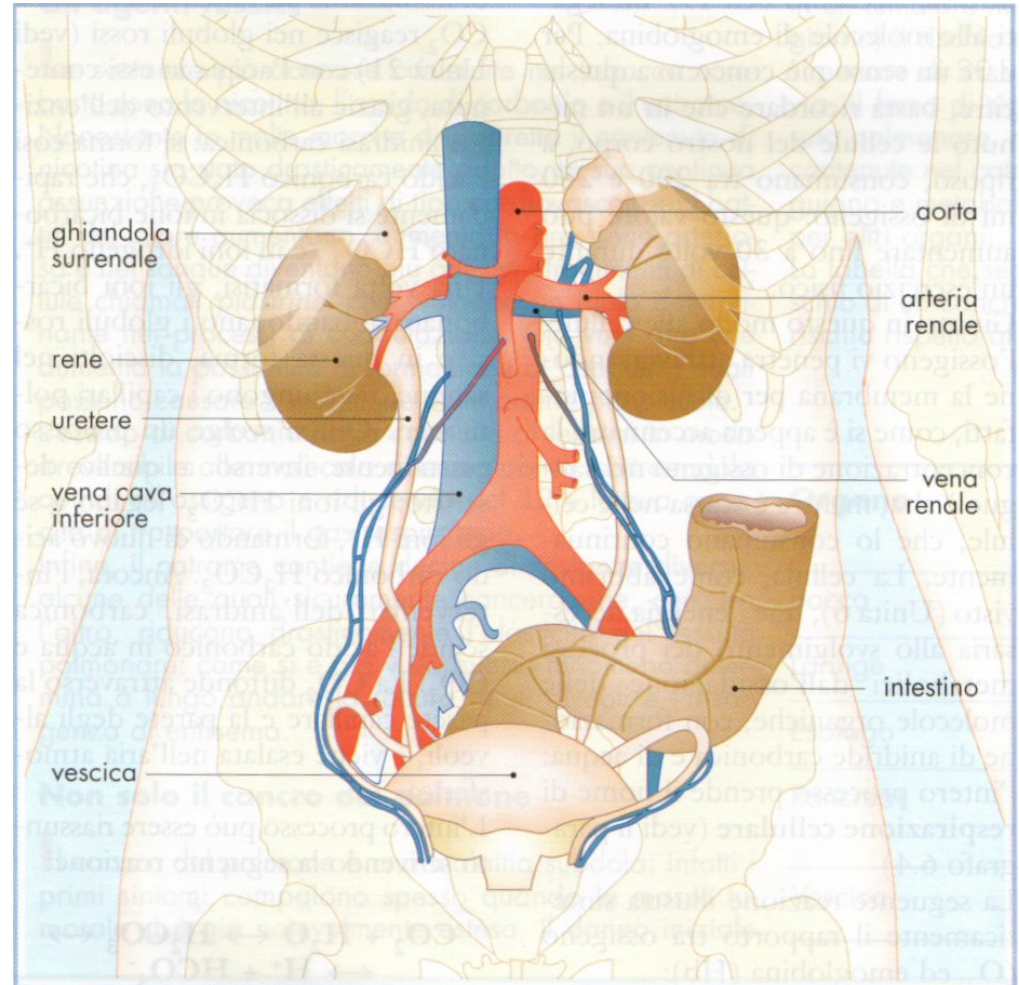
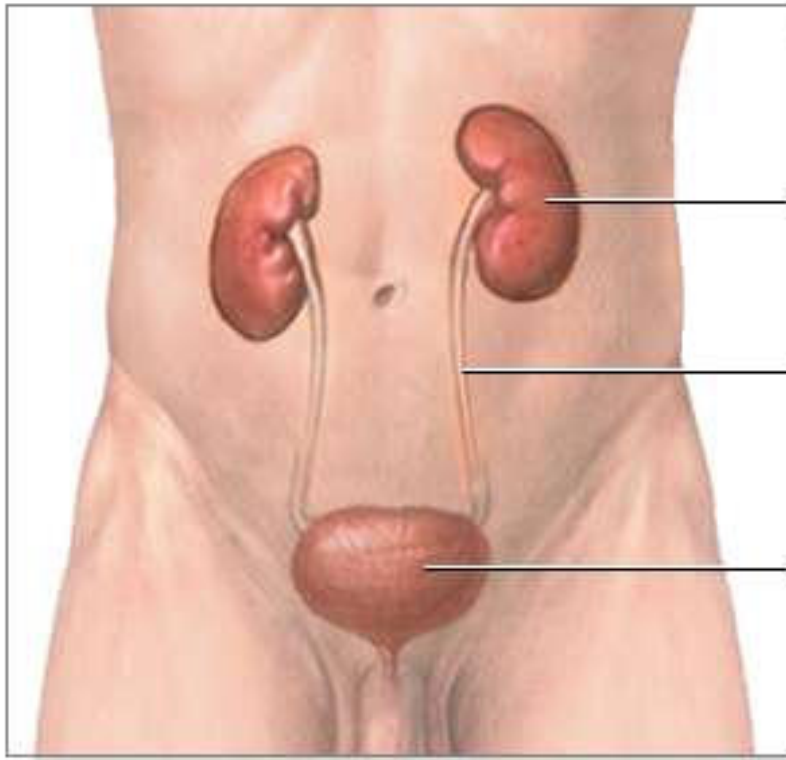
© Healthwise, Incorporated

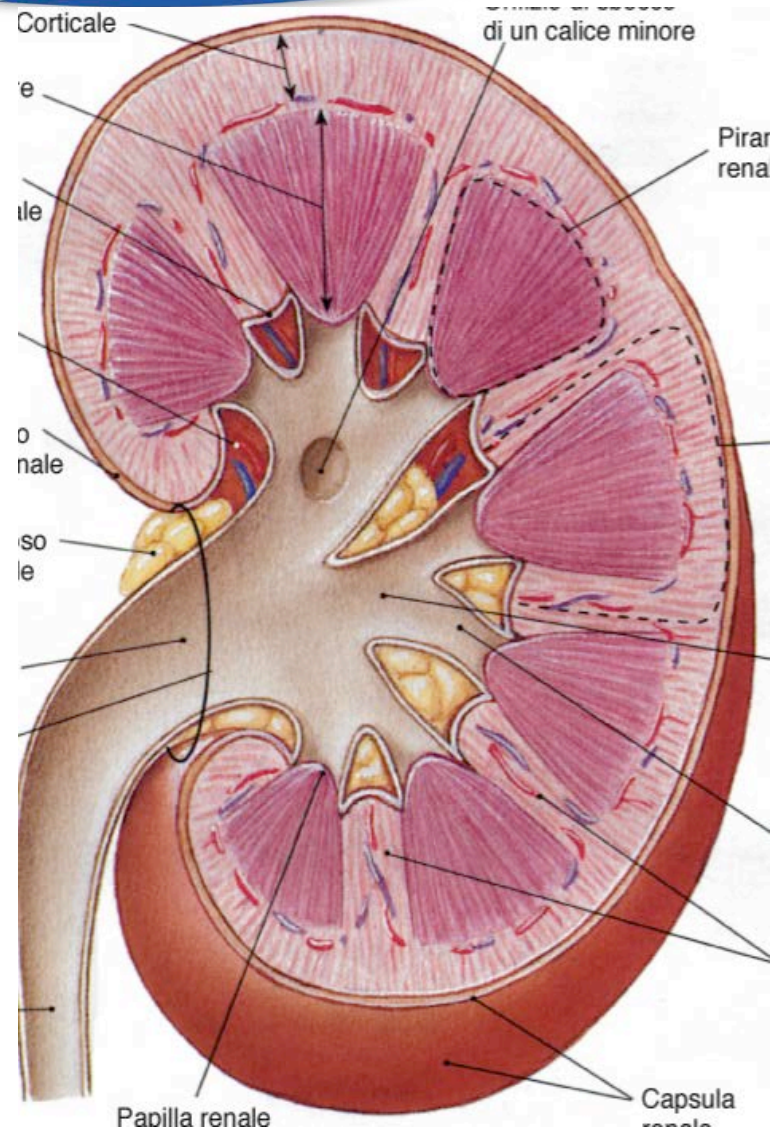
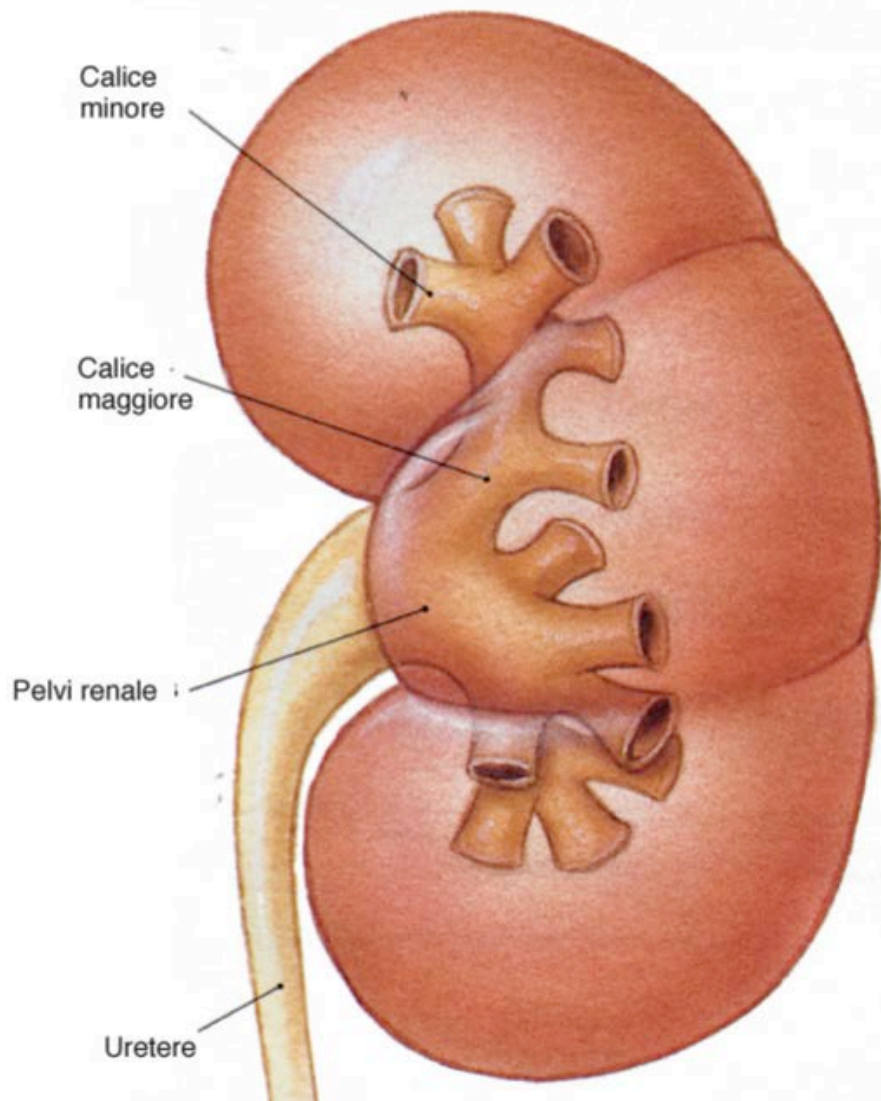


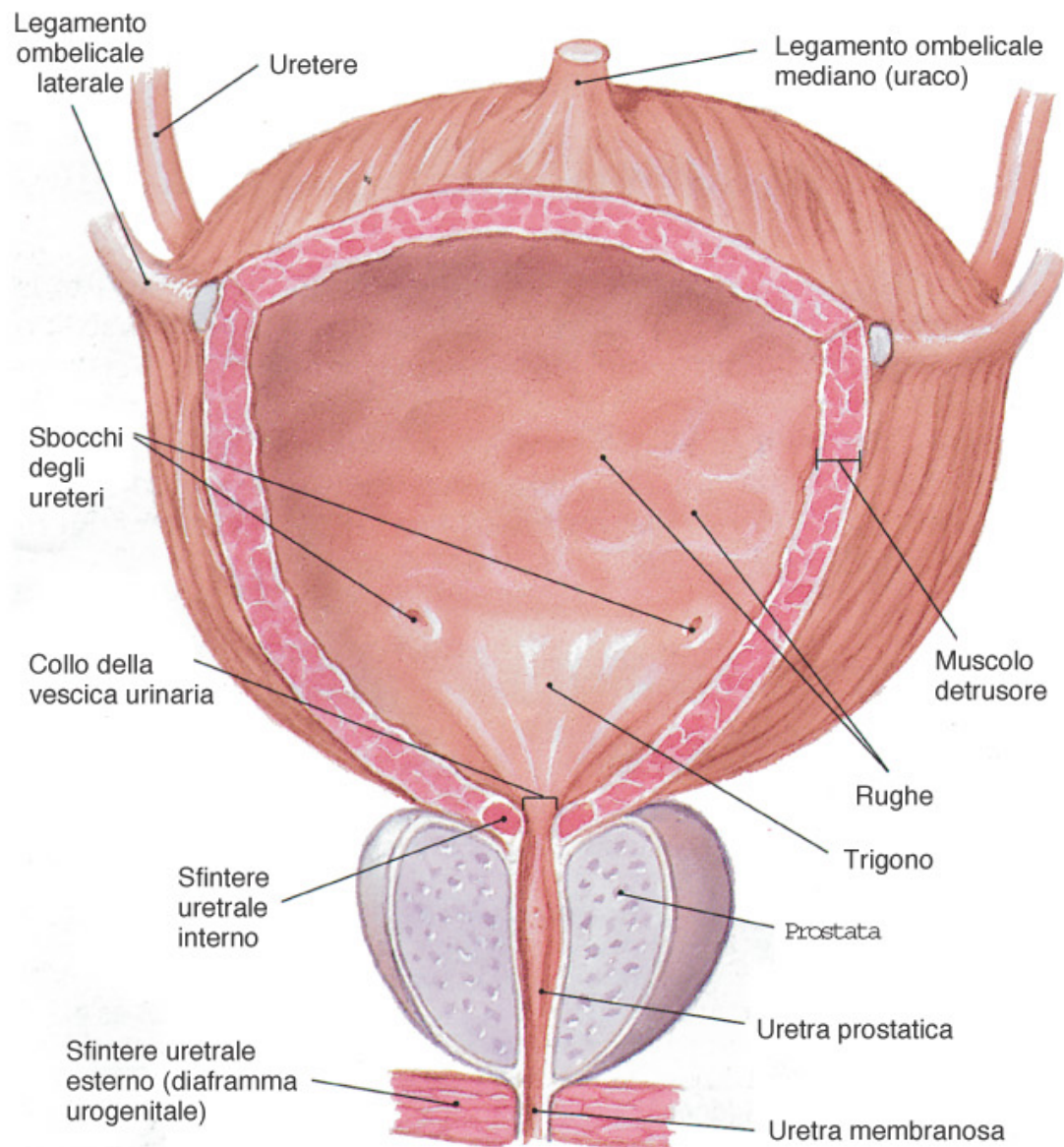


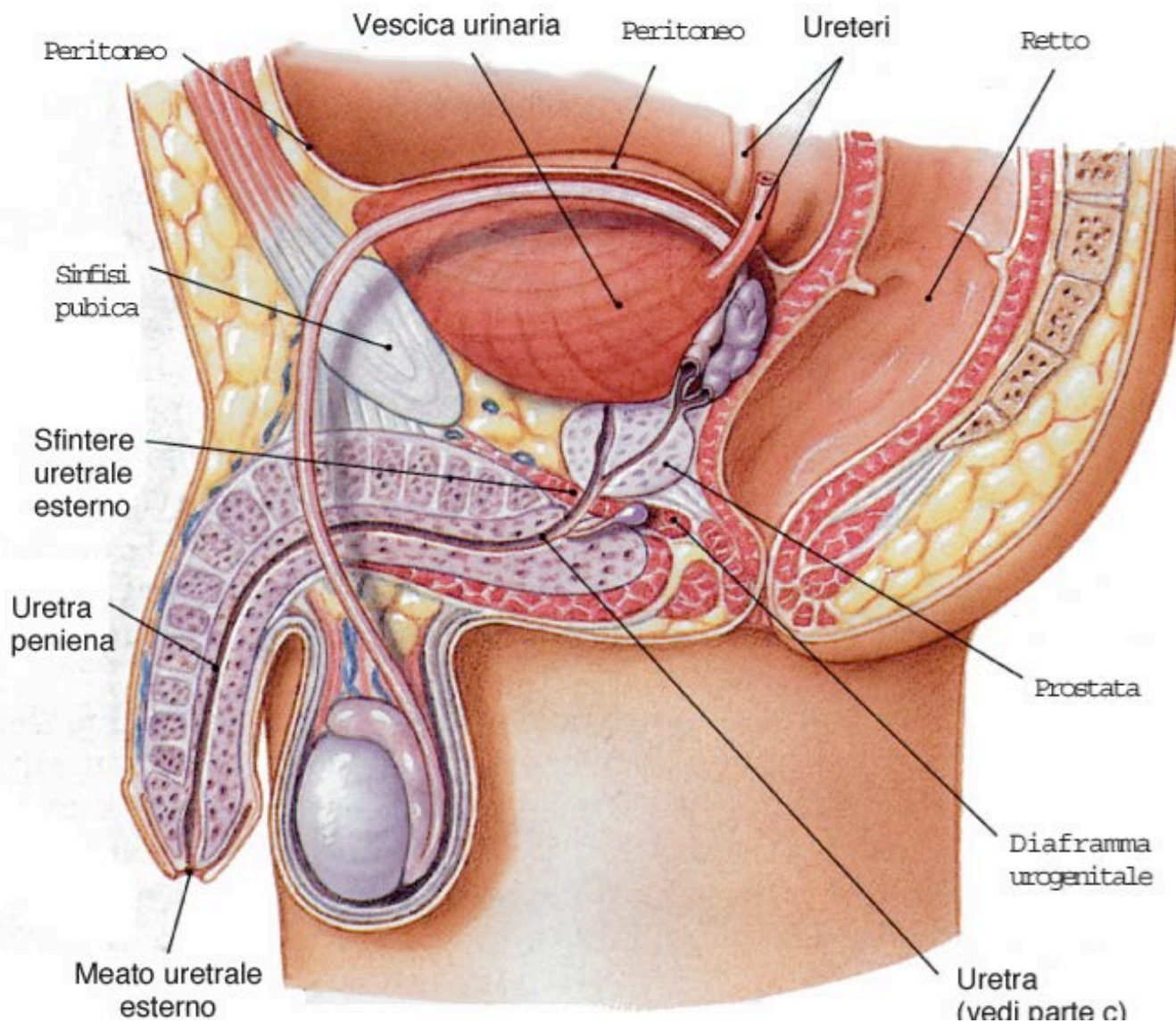


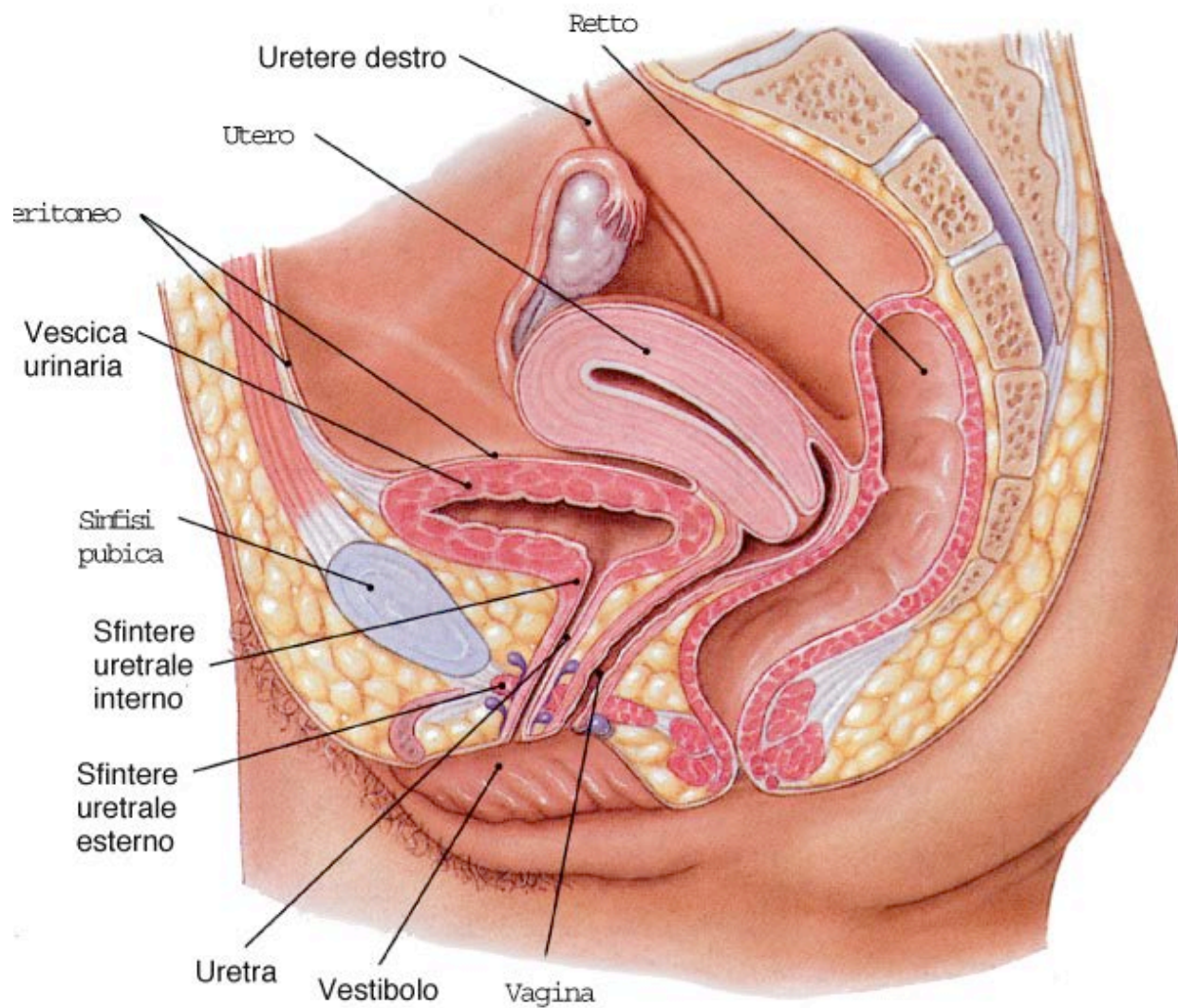
# APPARATO URINARIO



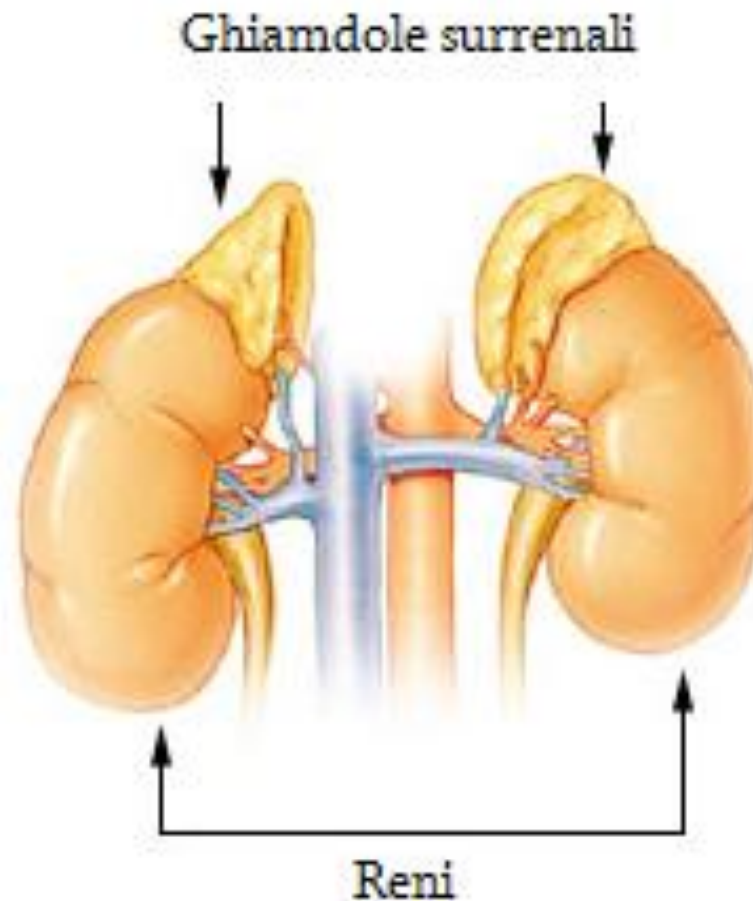








# GHIANDOLE SURRENALI



# APPARATO RIPRODUTTIVO MACHILE

